

TV Signal in Deep

Written by Administrator

Wednesday, 15 July 2009 20:07 - Last Updated Friday, 17 July 2009 15:30

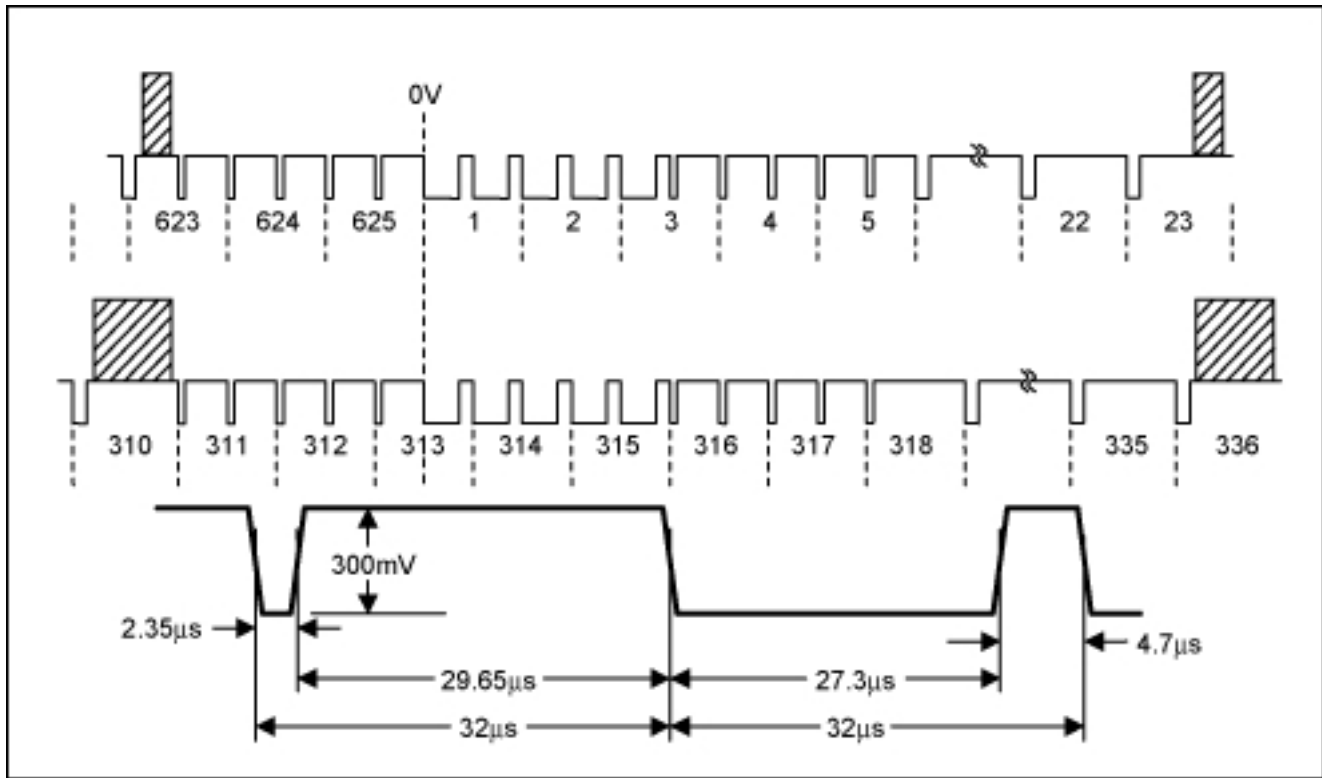
$$10 = 2R \times 10/360$$

$$30 = 2R \times 10/360$$

$$R = (30 \times 7 \times 360) / (2 \times 22 \times 10) = 171.8 \text{ cm}$$

171.8 cm

(Active Line)



3

(Visual Resolution & Bandwidth)

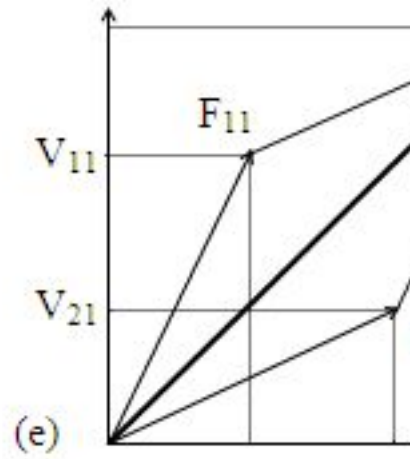
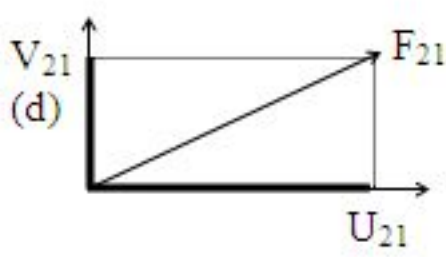
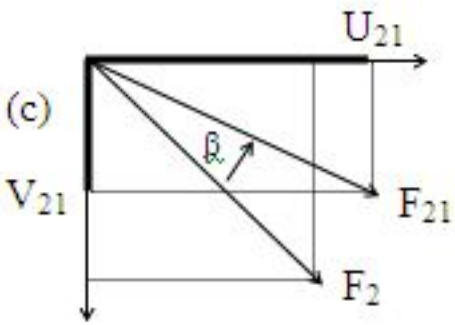
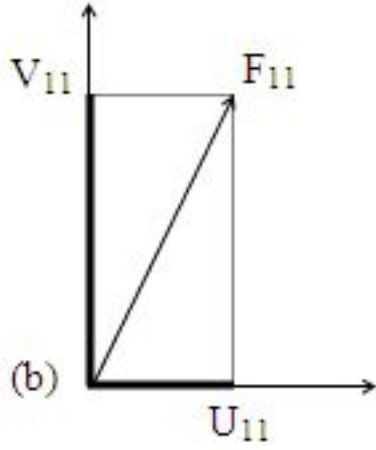
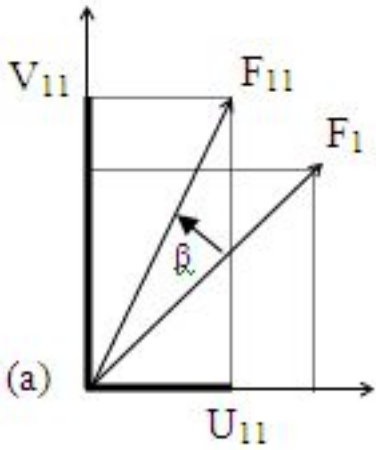
(format res

$$525/60 = 485 \times 0.7 =$$

$$625/50 = 575 \times 0.7 = 402.5$$

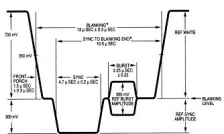
NTSC

PAL (Phase Alternate by Line)



PAL

11 (a) F1 V U
 F11 (b) F21 (d)
 PAL



PAL

